

**DOCUMENT 00 90 00
ADDENDUM**

ADDENDUM NO. [3] Date: March 17, 2020

**RE: SCHOOL DISTRICT OF HOLMEN
HIGH SCHOOL ADDITION AND REMODELING PHASE 2
1001 McHUGH ROAD
HOLMEN, WISCONSIN 54636
HSR 18061**

**FROM: HSR Associates, Inc
100 Milwaukee Street
La Crosse, WI 54603
(608) 784-1830**

To: Prospective Bidders

This addendum forms a part of the Contract Documents and modifies the original Bidding Documents dated February 2020. Acknowledge receipt of this Addendum in the space provided on the bid form. Failure to do so may subject the Bidder to disqualification.

This Addendum consists of [1] page and [2] 30 x 42 drawings.

CHANGES TO SPECIFICATIONS:

1. Section 09 24 16 GYPSUM BOARD ASSEMBLIES
 - a. Rate of deflection for studs carrying thin brick shall be 1/360.

CHANGES TO DRAWINGS

2. Sheet A103 FLOOR PLAN – SEGMENT H 30 x 42 attached hereto.
 - a. Revisions clouded on Drawing.
 - b. Wall type D7 revised to D11, 6 inch studs.
3. Sheet A310 WALL SECTIONS 30 x 42 attached hereto.
 - a. Revisions clouded on Drawing.
 - b. Extents of gypsum board revised above ceilings.
4. Sheet E600 LIGHTING, MOTOR AND PANELBOARD SCHEDULES
 - a. Add Fixture V in accordance with attached cut sheet.

END OF DOCUMENT 00 90 00

Page Intentionally Left Blank

Submitted by Mlazgar Associates



Job Name:

Arcadia School Wanek Center
 Contractor: B & B Electric - Eau Claire (Eau Claire)
 Distributor: Graybar Electric - Minneapolis
 (Minneapolis)

Catalog Number:

67L-W-D-2-2-DM-C1-35K-D055-NDM-1C-UNV-W1

Notes: *REFERENCE ONLY - APPROVAL OF FACTORY DRAWINGS REQUIRED*

Type:

V

RLMA19-79611

LITECONTROL
 making light work™

REFERENCE ONLY
FACTORY DRAWING REQUIRED
FOR FINAL APPROVAL

67L-W-D

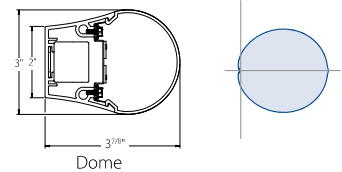
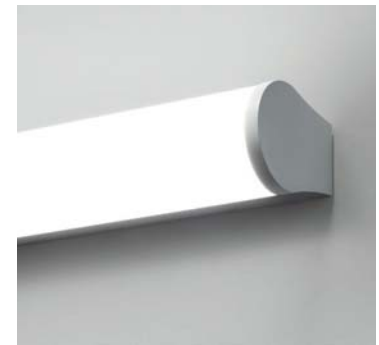
Note LED Wall Direct

Fixture Type:

Project Name:

Ordering Guide

Feature	Code	Options	Description
Series		67L	Note
Mounting		W	Wall
Fixture Distribution		D	Direct
Row Length (in feet)		2'	Enter in foot increments. Note fixture lengths below
Max length in row		02 03 04 06 08	2', 610mm 3', 914mm 4', 1219mm 6', 1829mm 8', 2438mm
Lens Type		DM BL SQ	Dome Bell Square
Finish/Color		C1 C2 C3 C4 C5 C6 CC	Matte White (Default) Textured, Matte White Light Silver Machined Aluminum Carbon Black Textured, Camera Black Custom Color
Color temperature		30K 35K 40K 2230TD 2750T 2765T	3000K 3500K 4000K 2200K-3000K SpectraSync™ Dim-to-Warm* 2700K-5000K SpectraSync™ Tunable White* 2700K-6500K SpectraSync™ Tunable White* *Must be ordered with D05 or D55 Driver options; excludes 2' and 3' lengths; excludes D160-D180 output options
Output/ft <i>(specifiable in 50 lumens/ft increments)</i>		D055 D180	550 (min) 1800 (max)
Driver		NDM D05 DS5 D01 DS1 D00 DS0 LEC LTW	Non Dimming 5% Dimming, 0-10V* Soft-Start 5% Dimming* 1% Dimming, 0-10V Soft Start 1% Dimming Dim-to-off Soft-Start Dim-to-off (1%) Hi-lume 1% EcoSystem LED Driver Hi-lume 1% 2-wire LED driver (120 forward only) *Must be ordered with 2230TD, 2750T or 2765T option
Circuiting		1C	1 Circuit
Voltage		UNV 120 240 277 347	Universal Voltage 120 Volt 240 Volt 277 Volt 347 Volt (D01 and NDM only)* *Exclusions; Lutron, Emergency battery and



*See page 2 for additional lens type details

Key Features

- Variable Intensity technology provides specifiable lumen output/wattage
- Up to 127 lumens/watt efficacy
- Output range from 550 to 1800 lumens/ft
- 2 SDCM color variation
- Removable Lens for ease of accessibility and installation
- ADA Compliant

Performance

Nomenclature	Lumens/ft	W/ft	Efficacy
D055	550	4.5	121
D100	1000	9.4	107
D145	1450	11.4	127
D180	1800	16.0	113

*Based on Dome Lens 35K

Page Intentionally Left Blank



Consultant:

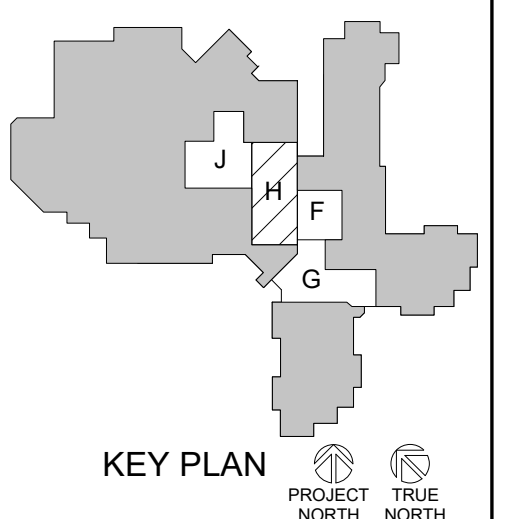
SCHOOL DISTRICT OF HOLMEN
HIGH SCHOOL REMODELING PH. 2
PROJECT LOCATION: 1001 McHUGH RD
HOLMEN, WI 54636
SHEET TITLE: FLOOR PLAN - SEGMENT H

Project Title:
HSR Project Number:
18061

Project Date:
FEBRUARY 2020

Drawn By:
M.MALAND/ MPL

Key Plan:



KEY PLAN

No.	Description	Date
A03	Addendum 3	3/18/2020

Graphic Scale:
VARIES

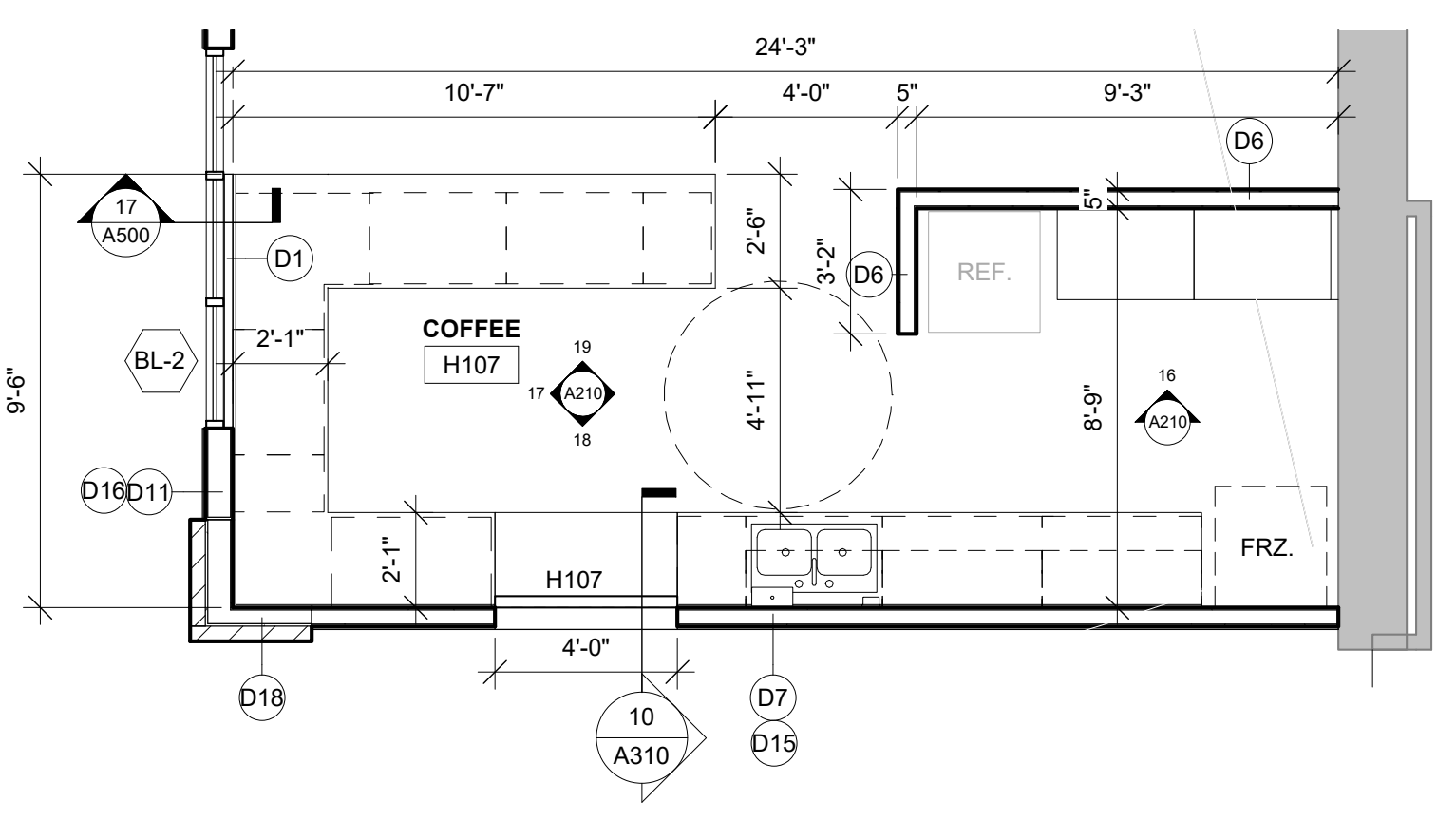
Last Update:
3/17/2020 12:33:02 PM

A103

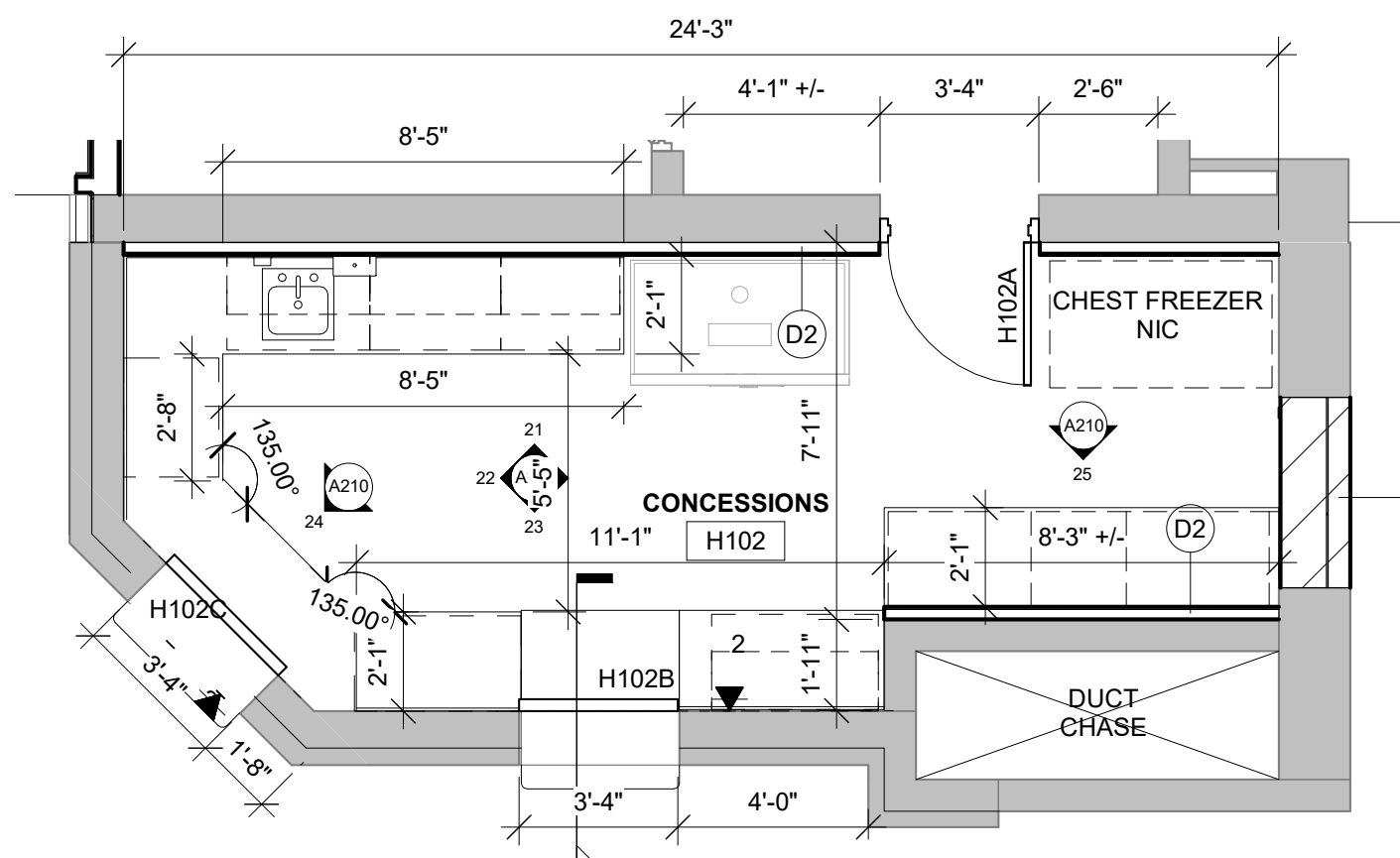
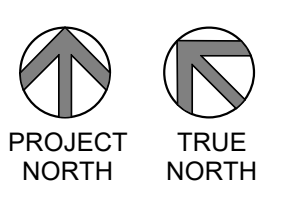
- GENERAL NOTES:**
- A SEE ID SHEETS FOR FLOOR AND WALL FINISH LAYOUTS.
 - B LOOSE FURNISHINGS EXCEPT AS NOTED SHALL BE PROVIDED AND INSTALLED BY THE OWNER.
 - C VERIFY EXACT SIZE AND LOCATION OF ALL MECHANICAL / PLUMB AND ELEC. OPENINGS - GENERAL CONTRACTOR SHALL BE RESPONSIBLE FOR FINISH AT ALL VISIBLE AREAS. ALL OPENING SHALL BE SEALED AFTER UTILITY INSTALLATION.
 - D PAINT ALL EXPOSED STEEL LINTELS.
 - E SEE STRUCTURAL FOR SLAB CONTROL JOINTS.
 - F EXTEND ALL WALLS TO DECK UNLESS NOTED OTHERWISE. SEE A600 FOR TOP OF WALL DETAILS.

- LEGEND:**
- (A) SYMBOL INDICATES WALL TYPE - SEE SHEET A600 & A601 FOR WALL TYPE DETAILS.
 - (A) SYMBOL INDICATES CONSTRUCTION NOTE THIS SHEET
 - BL-n BORROWED LIGHT - SEE A200.
 - (A-310) WALL SECTION
 - (A-300) BUILDING SECTION
 - (A) EXISTING DOOR TO REMAIN
 - (A) NEW DOOR - 4" FROM CORNER UNLESS NOTED OTHERWISE

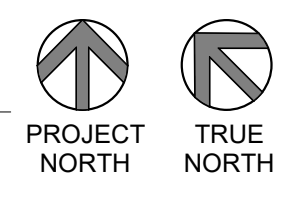
- KEY NOTES PLAN**
- 1 PLAM CASEWORKS - SEE ELEVATIONS.
 - 2 FOLDING GLASS WALL
 - 3 TOP OF WALL @ 4'-4" A.F.F.
 - 4 SLIDING SECURITY GRILLE - B-PARTING.
 - 5 CONCRETE STEPS - SEE 15A500.
 - 6 LINE OF GYP. SOFFIT ABOVE
 - 7 NEW LVF FLOORING - SEE INTERIOR SHEETS FOR EXTENTS
 - 8 PAINT NEW DOOR AND EXISTING FRAME-VERIFY EXISTING COLOR.
 - 9 24"W x 18"D VENTED METAL LOCKERS 84" HIGH W/ SLOPED TOP AND BUILT-IN BENCH W/ WOOD SEAT - ON 4" CONCRETE SLAB
 - 10 TOOTH IN OPENING WITH BURNISHED BLOCK TO MATCH ADJACENT WALL
 - 11 MIRRORS - 3'-0"W X 6'-0"H MOUNTED @ 2'-0" A.F.F. BUTTED NEXT TO ONE ANOTHER TO COVER WALL
 - 12 TOOTH-IN NEW BRICK TO EXISTING
 - 13 KNEE WALL SUPPORT
 - 14 PATCH CONCRETE SLAB AS REQUIRED TO ACCEPT NEW FINISHES.
 - 15 LINE OF FLOOR INFILL AND NEW CONCRETE SLAB.
 - 16 METAL COLLUM ENCLASURE
 - 17 NEW COLUMN LOCATION - SEE STRUCTURAL
 - 18 4'-0"H x 6'-0"W TACKBOARD - MOUNTED 3'-0" A.F.F.
 - 19 MONITOR - NIC
 - 20 EMERGENCY EYEWASH - PROVIDED BY OWNER
 - 21 ATM MACHINE - PROVIDED BY OWNER
 - 22 RELOCATE EXISTING OPERABLE PROJECTOR SCREEN - COORDINATE W/ ELEC.
 - 23 BRACKET MOUNTED FIRE EXTINGUISHER - FE
 - 24 1 1/2" RECESSED FLOOR IN SHOWERS. FD= FLOOR DRAIN - COORDINATE WITH PLUMBING.



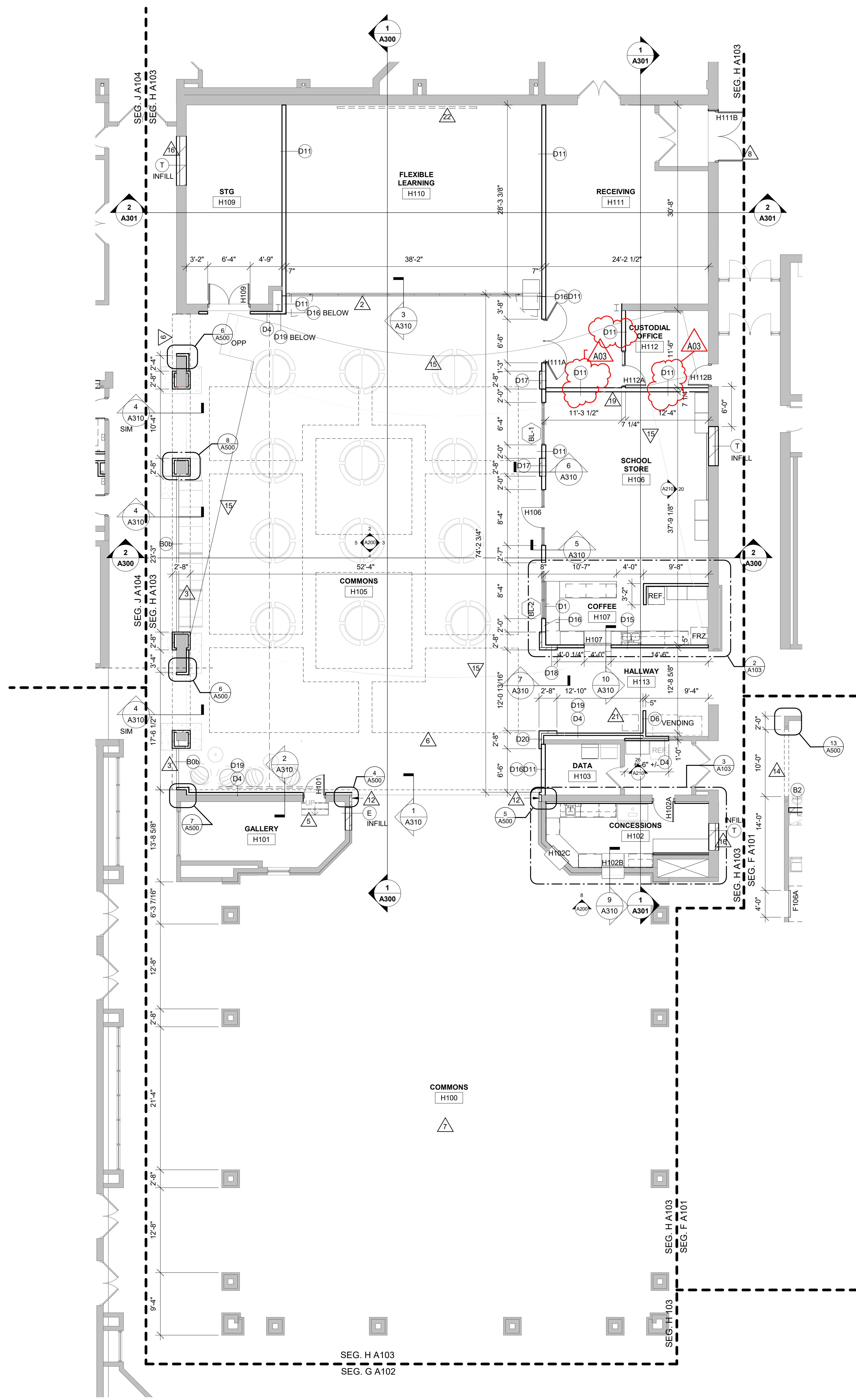
2 ENLARGED COFFEE PLAN
1/4" = 1'-0"



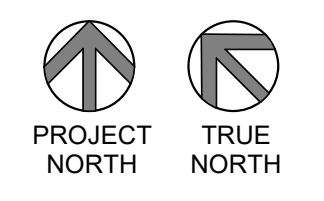
3 ENLARGED CONCESSIONS PLAN
1/4" = 1'-0"



SEE SHEET A104 FOR ACCESSORY SCHEDULE



1 FIRST FLOOR SEGMENT H REMODEL PLAN
1/8" = 1'-0"

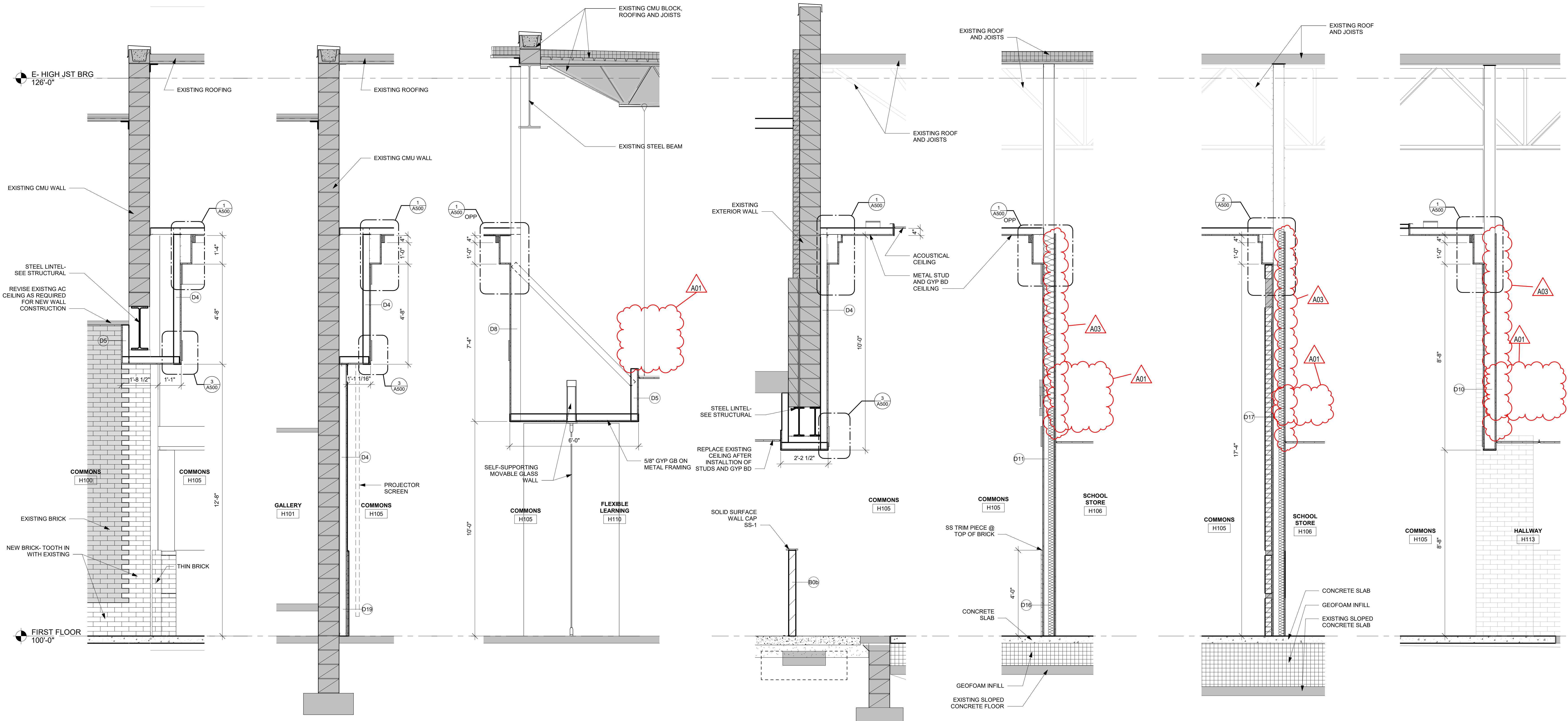


A103

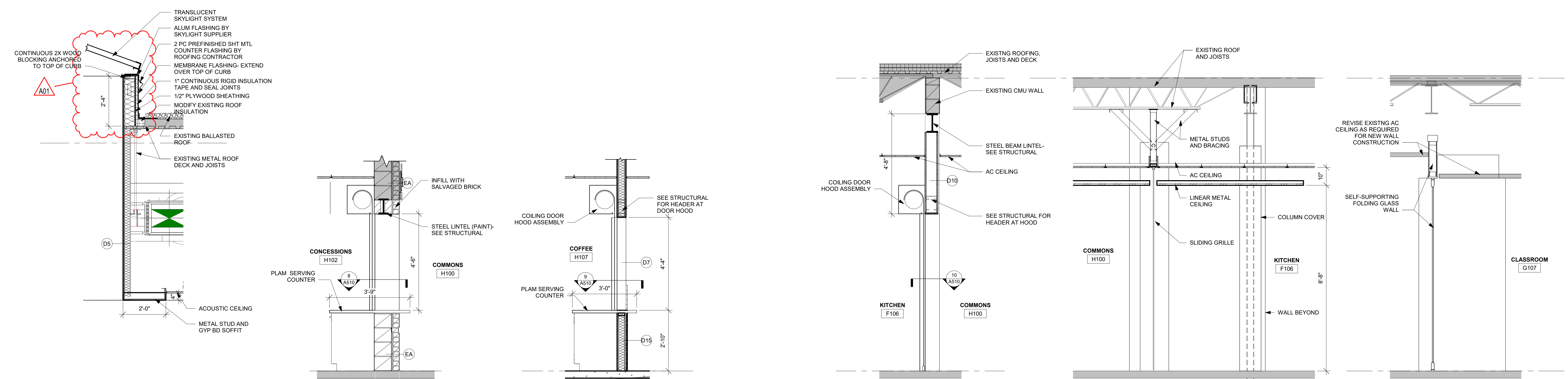


Consultant:

SCHOOL DISTRICT OF HOLMEN
HIGH SCHOOL REMODELING PH. 2
Project Location: 1001 McHUGH RD
HOLMEN, WI 54636
Sheet Title: WALL SECTIONS



1 WALL SECTION 1/2" = 1'-0"
2 WALL SECTION 1/2" = 1'-0"
3 WALL SECTION 1/2" = 1'-0"
4 WALL SECTION 1/2" = 1'-0"
5 WALL SECTION 1/2" = 1'-0"
6 A310-6 1/2" = 1'-0"
7 WALL SECTION 1/2" = 1'-0"



8 SKYLIGHT SECTION 1/2" = 1'-0"
9 COUNTER DR SECTION 1/2" = 1'-0"
10 COUNTER DR SECTION 1/2" = 1'-0"
11 COILING DR SECTION 1/2" = 1'-0"
12 GATE SECTION 1/2" = 1'-0"
13 WALL SECTION 1/2" = 1'-0"

Project Title:

HSR Project Number: 18061

Project Date: FEBRUARY 2020

Drawn By: MPL

Key Plan:

No.	Description	Date
A01	Addendum 1	3/13/2020
A03	Addendum 3	3/18/2020

Graphic Scale: VARIES

Last Update: 3/17/2020 12:33:09 PM

Revisions:

A310